

# PIKEPASS™

Summer  
2007

Toll Free 1.800.745.3727 or visit us on the web at [www.pikepass.com](http://www.pikepass.com)



## Pay Your PIKEPASS Online

In the past six months, over 20,000 PIKEPASS customers have discovered the convenience and ease of managing their accounts with PIKEPASS Online. Now you can also make payments, using your credit or debit card (Visa MC,

AMEX or Discover), from your home or office computer. Other features include: checking your balance, viewing statements, viewing primary vehicle information and changing billing information. Also available is the "Toll User's Toolkit" which contains valuable resources such as Mounting Instructions, Toll Rates, Store Locations and links to PIKEPASS forms.

If you haven't already signed up for online access, getting started is easy. Just visit our website at [www.pikepass.com](http://www.pikepass.com) and click the "My Account" link on the left hand side, in the green area. To establish access to your account, select the "set up access" option at the top, in the red area. You will need your account number, the primary account holder's driver's license number (or Federal Tax ID for Commercial accounts) and your four digit account access code to set up online access. You will also need to select a user name, password and a security question and answer. Your password will need to be between 9 and 15 characters long, contain both upper and lowercase letters and at least one number (i.e. Oklahoma1). If you do not already have an access code, or if your driver's license number is not on file, you will first need to call our Customer Service Center at 1-800-PIKEPASS (1-800-745-3727), M-F, 8:00am-4:30pm CDT, excluding state recognized holidays.



## Stroud Midway Store Trial Over

As of June 28th, the trial Full Service Center, located at the Stroud Midway McDonald's on the Turner Turnpike, has ceased operations. For in person service, please visit us at one of the following:

### \*\*Full Service Centers\*\*

M-F, 8:30am-5:30pm, excluding state recognized holidays

**Oklahoma City** - 4401 W. Memorial Rd. Suite 130

**Tulsa** - 6212 S. 57th W. Ave.

### \*\*Limited Service Facilities\*\*

Until 4:00pm, M-F, excluding state recognized holidays

Various statewide locations (Visit [www.pikepass.com](http://www.pikepass.com) for a complete listing of locations and available services.)

We thank all those who participated by using the Stroud Midway trial service location. We gained valuable information to assist us in planning future service options.

## Miami Service Plaza Closing

On July 1st, the westbound Miami Service Plaza, located on the Will Rogers Turnpike, will close. The Oklahoma Tourism Center, in the same complex, will not be affected.

The lease agreement expires at the end of June and the provider has elected not to renew. Fuel and food services are still available at the Vinita plaza, 25 miles farther west.

## Premailed PIKEPASS Recycling Underway

Be sure to keep an eye on your mail over the next several weeks and months. You may receive a new PIKEPASS.

We are testing a new program to exchange transponders that are due for recycling by premailing replacements. Passes must be recycled periodically due to their battery life or because a problem has been detected during use.

If you receive a new pass, enclosed will be instructions for mailing in your old pass. **Be sure to return it within 30 days of the notice, or your account will be assessed a \$30 lost equipment fee.** If the fee is assessed, don't worry, the \$30 will be credited back as soon as we receive the old PIKEPASS.

If you have a PIKEPASS with an OTA# under 1,000,000 (The OTA# can be found on the bar code on the back of the transponder.) and want to get a jump start on the recycle process, you can bring it by one of our Full Service Centers or Limited Service Facilities and exchange it for a new one. A complete list of locations is available at [www.pikepass.com](http://www.pikepass.com).



## Improve Gas Milage

With gas prices skyrocketing, every little bit helps. Here are some suggestions to improve your vehicle's fuel economy:

- Drive Efficiently - Speeding, rapid acceleration and braking wastes gas. Keep to the speed limit. Also, avoid excessive idling and be sure to use cruise control and overdrive gears if you have them.
- Keep Your Vehicle Well Maintained - Keep the engine tuned, have regular oil changes and keep your tires inflated to the proper pressure. Also, regularly check and replace the air filter.
- Plan Your Travel - Combine trips whenever possible. Avoid traveling with excessive weight. Remove luggage or bicycle racks when not in use.



## Avoid \$30 Damage Fee

Do not write on, paint, use fingernail polish on or otherwise deface your PIKEPASS transponder. This is considered damaging the pass and will result in a \$30 equipment fee charged to your account.



# OKLAHOMA FESTIVALS AND EVENTS

OKLAHOMA  
CENTENNIAL  
1907-2007

With Oklahoma celebrating 100 years of statehood, 2007 is a great year to check out some of the activities around the state. Below is only a small selection. Visit [www.oklahomacentennial.com](http://www.oklahomacentennial.com) for a more complete listing.

### JULY

- 11-15 - **Woody Guthrie Folk Festival** - Okemah
- 13-15 - **Bricktown Nationals** - Oklahoma River, Downtown Oklahoma City - The largest drag heat race in the US with 171 teams from across the country.
- 21 - **Stratford Peach Festival** - Stratford City Park, 9am-4pm - Music, arts, crafts, food, games, auto show, rodeo and more.
- 27 - **Eufaula's Oklahoma is OK: Famous Facts** - Eufaula Main Street

### AUGUST

- 3-5 - **Broken Arrow's Gatesway Balloon Festival** - Broken Arrow - Hot air balloon competitions, food, entertainment, arts & crafts, family activities, etc.
- 3-5 - **Lawton Centennial Celebration** - Lawton - Various activities including historical reenactments and the Lawton/Ft. Sill 106th Birthday Celebration.
- 4 - **Vinita's Route 66 Car Show** - North Park, Vinita
- 9-11 - **Rush Springs Watermelon Festival** - Jeff Davis Park, Rush Springs - Events include rodeo, parade, seed spitting contest and others.
- 31-Sep. 3 - **Arts Festival Oklahoma: A Centennial Celebration** - Oklahoma City Community College - Art exhibition and market, performing artists, more.

### SEPTEMBER

- 7-13 - **Oklahoma Senior State Games** - Oklahoma City - Olympic style sports festival for persons 50 years and older.
- 9-15 - **Arbuckle Mountain 8th Annual Bluegrass Festival** - Arbuckle Mountain Park, Davis - Bluegrass and Gospel bands.
- 13-23 - **Oklahoma State Fair/Centennial Exposition 2007** - State Fair Park, Oklahoma City - In addition to the usual fair favorites, this year the fair hosts the Oklahoma Centennial Exposition with special exhibits.
- 27-Oct. 7 - **Tulsa State Fair** - Tulsa County Fairgrounds - Centennial theme.

## THIS IS LITTER



Keep yours in the car.

A friendly reminder from

KEEP OKLAHOMA  
BEAUTIFUL

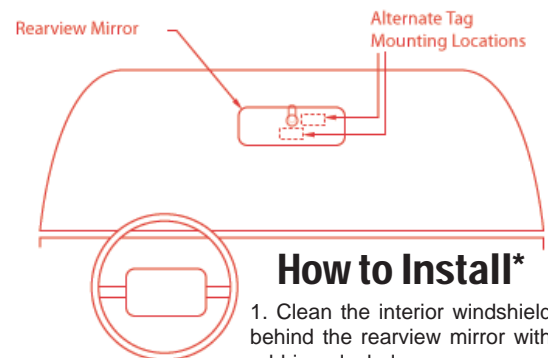
[www.KeepOklahomaBeautiful.com](http://www.KeepOklahomaBeautiful.com)

## Keep the Pass on the Glass

To ensure consistent reads, and to be in compliance with the License and Use Agreement, your PIKEPASS **must be correctly mounted on your windshield at all times** when traveling Oklahoma turnpikes. Failure to properly mount your pass can result in:

- Incorrect Toll Charges (System Matched Transactions)
- Toll Evasion Fines
- Violation Tolls

\*Some vehicles require special mounting. For a list, visit [www.pikepass.com](http://www.pikepass.com), select the "Mounting Instructions" option from the PIKEPASS drop down menu and click the "Special Vehicle" link on the left.



### How to Install\*

1. Clean the interior windshield behind the rearview mirror with rubbing alcohol.
2. Remove the clear plastic tape from the backside mounting strips on the PIKEPASS.
3. Position the PIKEPASS on the windshield behind the rearview mirror, as shown above. **Note: Install the pass at least 2 inches from any metal surface, including the rearview mirror mounting arm.**
4. Press the PIKEPASS firmly against the windshield.